

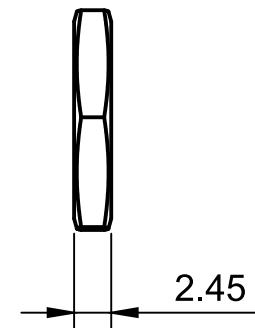
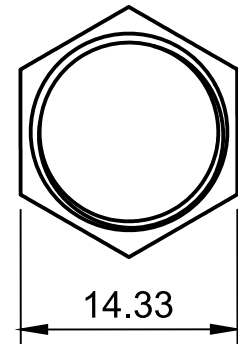
ELECTRICAL SPECIFICATIONS

Impedance: 50 Ω
 Frequency: DC - 18 GHz

MATERIALS AND FINISHES

SMA Connector: Stainless Steel, Passivated
 Center Contact: Beryllium Copper, Gold Plated
 Jacket: Stainless Steel
 Washer: Stainless Steel
 Nut: Brass, Nickel Plated

Unspecified tolerances: ± 0.2 mm



Created by Razvan Cojocariu		DWG No. SMA-BBLK-2	
COJOTECH		RoHS	
Description SMA Jack-to-Jack with BNC-Bulkhead hole adapter.		Dimensions are in mm.	
Rev. 1	Date 2020-01-01	Sheet 1/1	